
Registration for Our Biennial Member Conference is Now Open!

Hello PXE family! Registration for our Biennial Member Conference is now open. The meeting will be held at the PXE International Center of Excellence in Research and Clinical Care at Thomas Jefferson University in Philadelphia, PA. The meeting is set for October 16th to 18th, 2020. We will share more information across all PXE International communication platforms as it becomes available. Please register at the link below, we can't wait to see you there.

[Register Here](#)

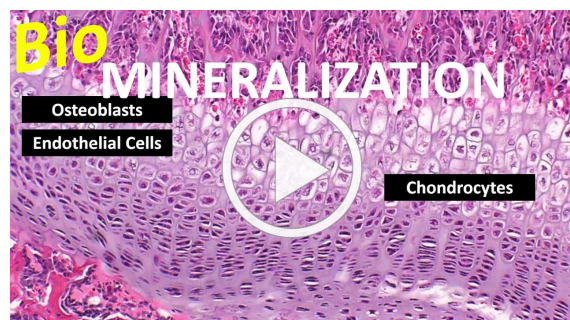
Want to Participate in PXE Research?

If you have two or more siblings and can travel to Philadelphia (some compensation will be provided) you may be eligible to participate in exciting PXE research. Please reach out to us ASAP at info@pxe.org

The Delight and Villainy of Biomineralization Part Two--Join Us for the Conclusion!

What – this sounds like gibberish?
Well, join us for the second of two
webinars on how

PXE affects biomineralization in the body to learn more. Hosted by Stephanie Moore, this webinar will further flesh out the discussion of part one and better our understanding of this aspect of PXE. Check out Part One to the right and register below to join us for Part Two! See all PXE research webinars on [our YouTube channel](#).



[Register for Webinar](#)

Order Your PXE Merch Today!



Order your PXE International T-Shirt today! We have a variety of sizes available and our shirts are made of a polyester blend that keeps you comfortable all day long. We have a limited selection of sizes left available! Please let us know if you have questions!

[Order Here](#)

All proceeds from these orders go towards PXE research!

[PXE International](#)

